

ASOFT



**SMARTER DECISIONS , STREAMLINED
OPERATIONS , REAL-TIME CONTROL.**



BY TOTAL SOLUTIONS SOFTWARE 





OVERVIEW



ASoft is a powerful, modular ERP solution designed to help businesses manage accounting, inventory, sales, purchasing, and reporting all in one integrated system. Built to scale with your business, whether single-location or multi-branch.





KEY FEATURES



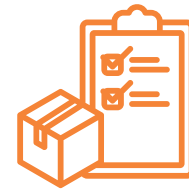
FINANCE , ACCOUNTING & TAX

General ledger, AR/AP, journal entries, trial balance, multi-currency support , CTAS Integration.



PURCHASING

Supplier database, purchase orders, price comparisons, GRN, payment tracking.



INVENTORY MANAGEMENT

Real-time stock updates, item tracking, automatic reorder levels, valuation reports.



REPORTING & DASHBOARDS

Visual dashboards, financial statements, daily business summaries, audit logs.



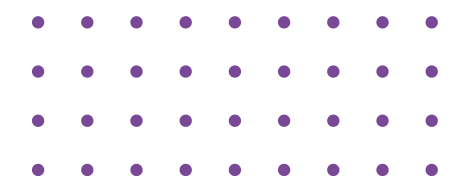
SALES & INVOICING

Sales orders, quotations, billing, receivables, customer management.



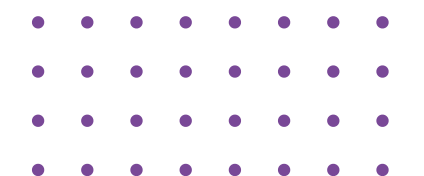
USER ACCESS CONTROL

Role-based permissions and security monitoring for complete control.





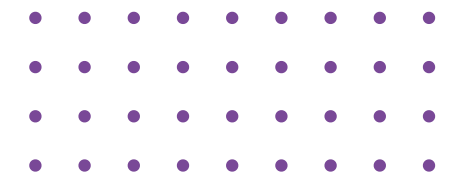
SPECIAL FEATURES





DISCOVER THE POWER AND FLEXIBILITY OF ASOFT

Designed to adapt to your business , not the other way around.



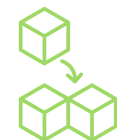
USER-FRIENDLY CUSTOM WORKFLOWS

Empower users to create and manage their own workflows with ease, without the need for coding or technical expertise.



INTUITIVE CUSTOM REPORTING

Generate tailored reports effortlessly, giving every department the insights they need, when they need them.



MODULAR ADD-ONS, SEAMLESS INTEGRATION

Extend system capabilities with plug-and-play modules , no disruptions to your core ERP functionality.



HIGHLY CUSTOMIZABLE USER INTERFACE

Over 90% of screens are user-configurable from default views in purchasing, sales, and beyond, to search fields and display preferences.



CROSS-PLATFORM SUPPORT

Run ASoft ERP on both Windows and Web platforms, giving your team access anytime, anywhere.

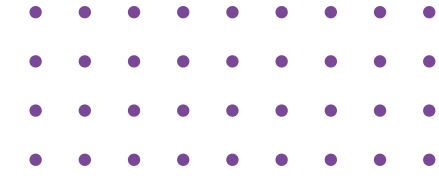


FLEXIBLE DATABASE DEPLOYMENT

Choose the storage option that fits your business best — whether on-premise or cloud-based infrastructure.



KEY BENEFITS



01 STREAMLINE OPERATIONS WITH
ALL-IN-ONE INTEGRATION

02 REAL-TIME DATA = FASTER, SMARTER
DECISIONS

03 REDUCE MANUAL ERRORS AND
PAPERWORK

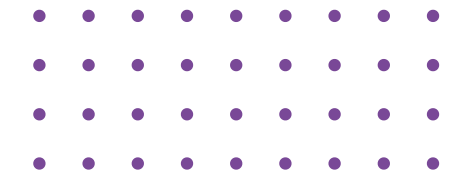
04 FULLY CUSTOMIZABLE FOR ANY
BUSINESS SIZE

05 FAST IMPLEMENTATION WITH LOCAL
SUPPORT

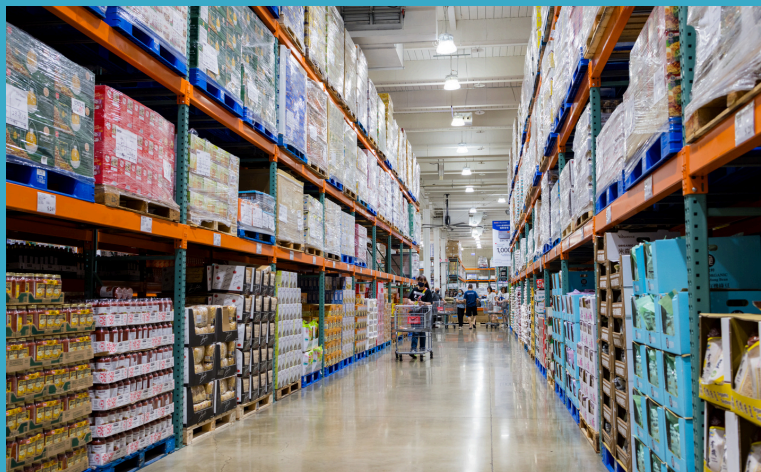
06 ROLE-BASED ACCESS CONTROL AND
DATA SECURITY



MADE FOR YOUR BUSINESS



Whether you're in retail, manufacturing, or running multiple branches, our ASoft ERP is designed to meet your needs. Ideal for:



RETAIL & WHOLESALE DISTRIBUTORS

Designed for minimarkets, supermarkets, hypermarkets, and wholesalers, ASoft simplifies inventory, streamlines orders, and ensures real-time control across all locations.



MANUFACTURERS

Optimize production schedules, track raw materials, and ensure quality control for efficient operations.



MULTI-BRANCH BUSINESSES

Centralize data across locations for consistent processes, better control, and faster decision-making.



SERVICE COMPANIES

Manage projects, schedule resources, and track billing, all in one easy-to-use platform.



WHY CHOOSE ASOFT ?



With over 25 years of experience, our ASoft ERP system is trusted by hundreds of businesses. We provide fast, responsive local support, and tailor our solutions to match your exact workflow , making digital transformation easy and affordable.

■ PROVEN EXPERTISE

We know how to deliver ERP solutions that work practical, proven, and built for real business needs.

■ TAILORED TO FIT YOU

No two businesses are alike. That's why we customize every solution to align with your exact workflow, industry needs, and growth plans.

■ PROVEN TRUST

Trusted by businesses of all sizes, our ERP system helps teams work smarter, faster, and more efficiently every day

■ SMART & SIMPLE

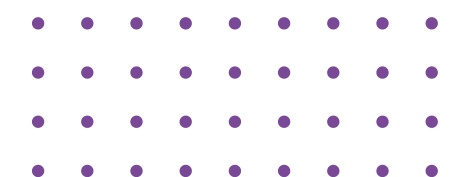
We make digital transformation easy, with flexible solutions that fit your needs and budget.

■ SUPPORT THAT CARES

We're right where you need us , offering fast, friendly, and knowledgeable support from a team that truly understands your business environment.

■ UNLIMITED USERS

No user limits, boost collaboration and efficiency across your entire business.





CONTACT US NOW

Let's transform your operations and drive measurable growth together.



Whatsapp & Phone

+62-811-631-168

+62-811-608-0678 (Jabodetabek)



www.totalsolutions.co.id



sales@totalsolutions.co.id



Head Office

Mega Com Centre Blok A No. 5-6-7 Jl. Kapt. Muslim,
Medan Sumatera Utara, Indonesia

Pekanbaru Branch

Jl. Karya Bakti, Kompleks Karya Bakti Sentosa No. H3,
Pekan Baru Riau, Indonesia

Jabodetabek Branch

Paramount Serpong, Malibu Village Blok D no 30,
Pagedangan, Banten, Indonesia





THANK YOU

Wishing Success Together